



NetWyl Informatik
IT-Security Experts

Checkpoint SIC reset without stopping production

Version 1.0

Dokument Name: Checkpoint SIC reset without stopping production

Dokumentenkontrolle

Version	Datum	Änderungsnotiz	Betroffene Seiten	Status	Author
1.0	10.07.2004				

Copyright 2024 NetWyl Informatik

NetWyl Informatik GmbH
Täschmattstrasse 19
6015 Luzern
info@netwyl-informatik.ch
Phone: +41 41 520 73 90

Type in the following commands to Reset SIC on your Gateway:

```
[Expert@HostName]# cp_conf sic init New_Activation_Key norestart
```

Instead of New_Activation_Key type in the SIC key you want to be used between your Management Server and the gateway

- [Expert@HostName]# cpwd_admin stop -name CPD -path "\$CPDIR/bin/cpd_admin" -command "cpd_admin stop"

That process stops CPD daemon, which is responsible for:

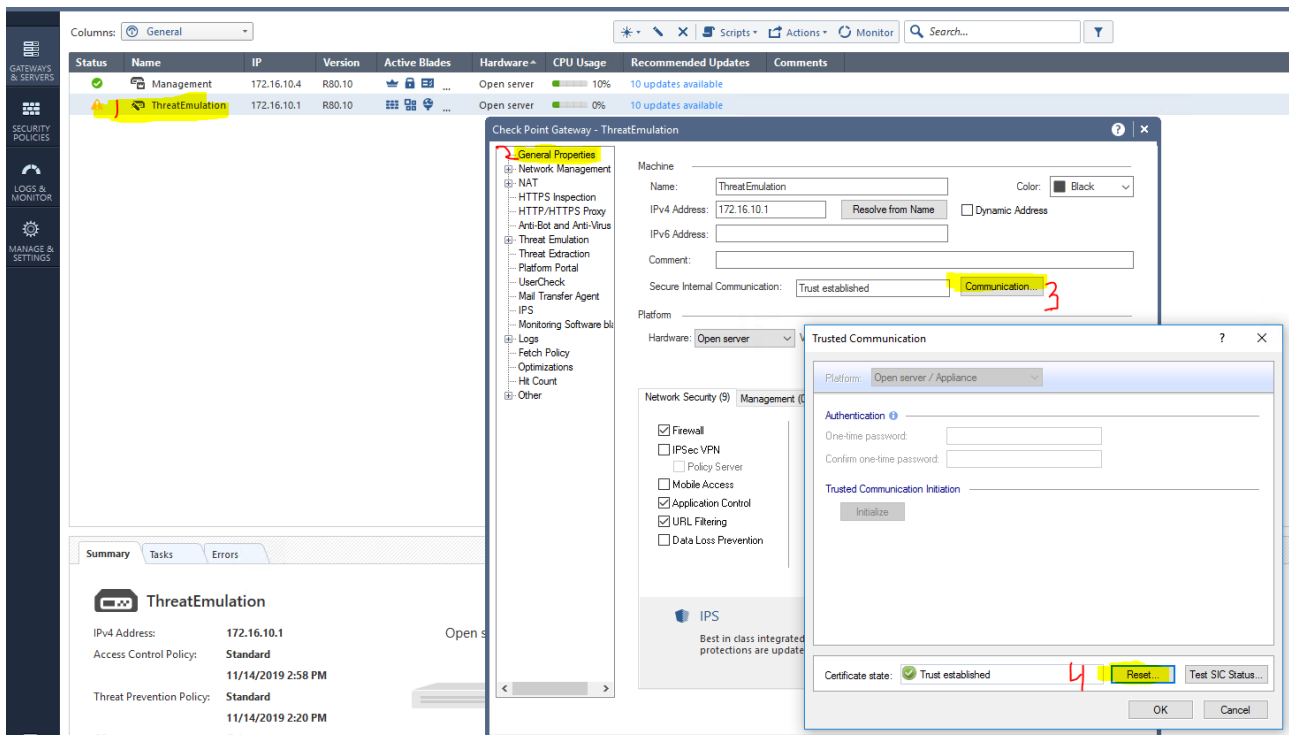
Port 18191 - Generic process (add-ons container) for many Check Point services, such as installing and fetching policy, and online updates

Port 18211 - SIC push certificate (from Internal CA)

- [Expert@HostName]# cpwd_admin start -name CPD -path "\$CPDIR/bin/cpd" -command "cpd"

Starts the CPD process

1. Then re-establish SIC from SmartConsole



cp_conf sic

Description Use the `cp_conf sic` commands to manage SIC on the Security Management Server.

Syntax

```

> cp_conf sic state
> cp_conf sic init <key> [norestart]
> cp_conf sic cert_pull <management> <object>
  
```

Parameter	Description
state	Shows the SIC trust state.
init <key>	Restarts SIC with the Activation Key <key>.
[no restart]	By default, the Security Gateway runs <code>cpstop</code> and <code>cpstart</code> when you restart SIC. Use the <code>norestart</code> parameter to restart SIC and to not run <code>cpstop</code> and <code>cpstart</code> .
cert_pull	For DAIP Security Gateways, pulls a certificate from the Security Management Server for the <object>
<management>	Name or IP address of the Security Management Server