



NetWyl Informatik
IT-Security Experts

Checkpoint Backup Snapshot

Version 1.0

Dokument Name: Checkpoint_Backup Snapshot

Dokumentenkontrolle

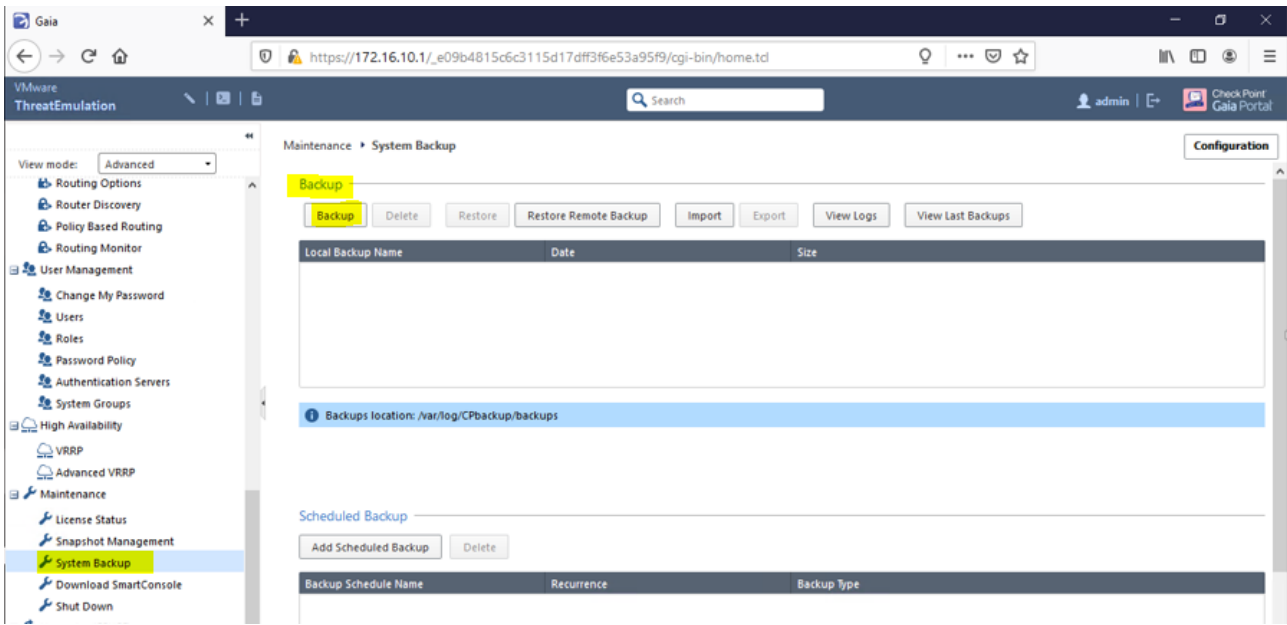
Version	Datum	Änderungsnotiz	Betroffene Seiten	Status	Author
1.0	10.07.2024				

Copyright 2024 NetWyl Informatik

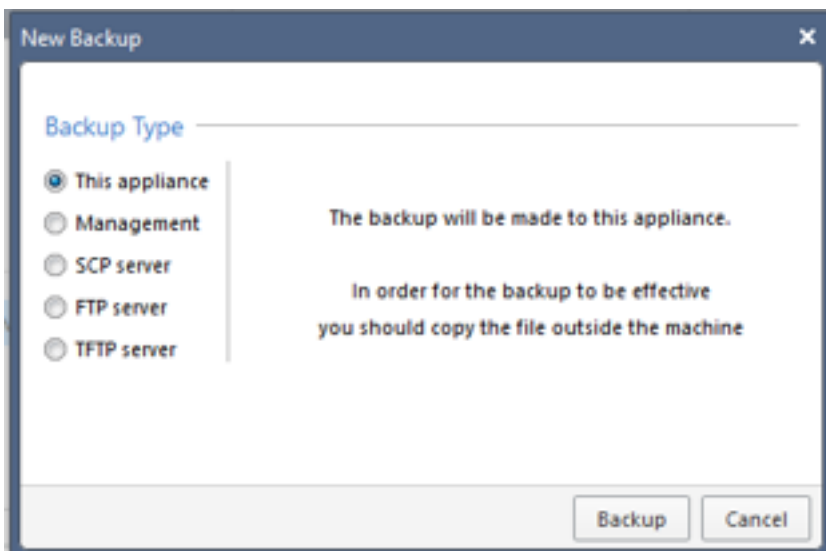
NetWyl Informatik GmbH
Täschmattstrasse 19
6015 Luzern
info@netwyl-informatik.ch
Phone: +41 41 520 73 90

Backup

1. System Backup -> Backup -> Backup

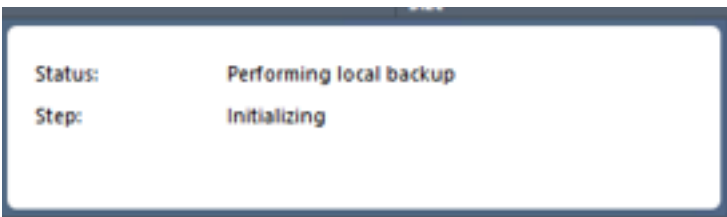


Backup Type -> Choose where you want to keep your backup

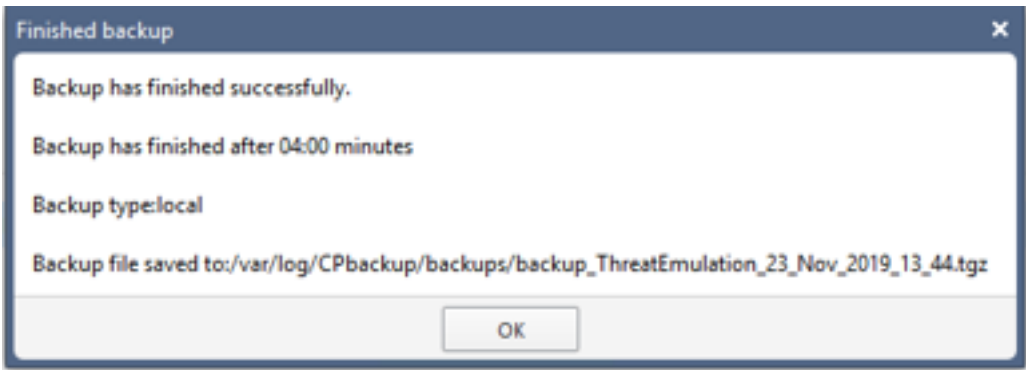


Once you click Backup, it will initialize a backup process.

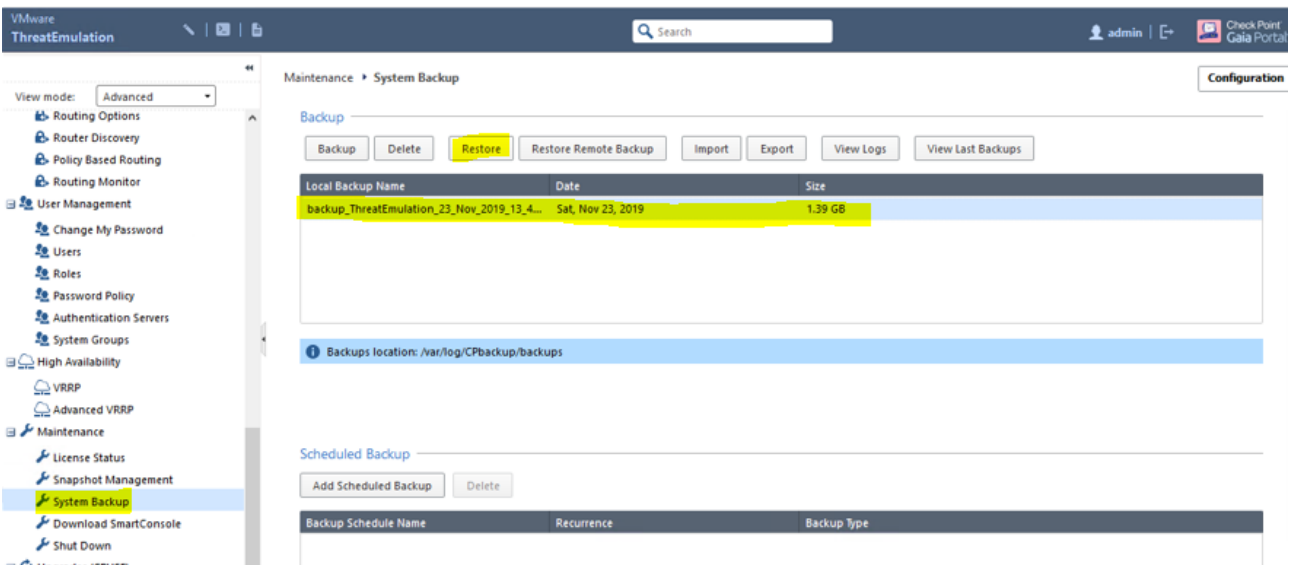
Note: Can be performed in production, since it does not stop Check Point services.



When the backup is finished, you will see the following message

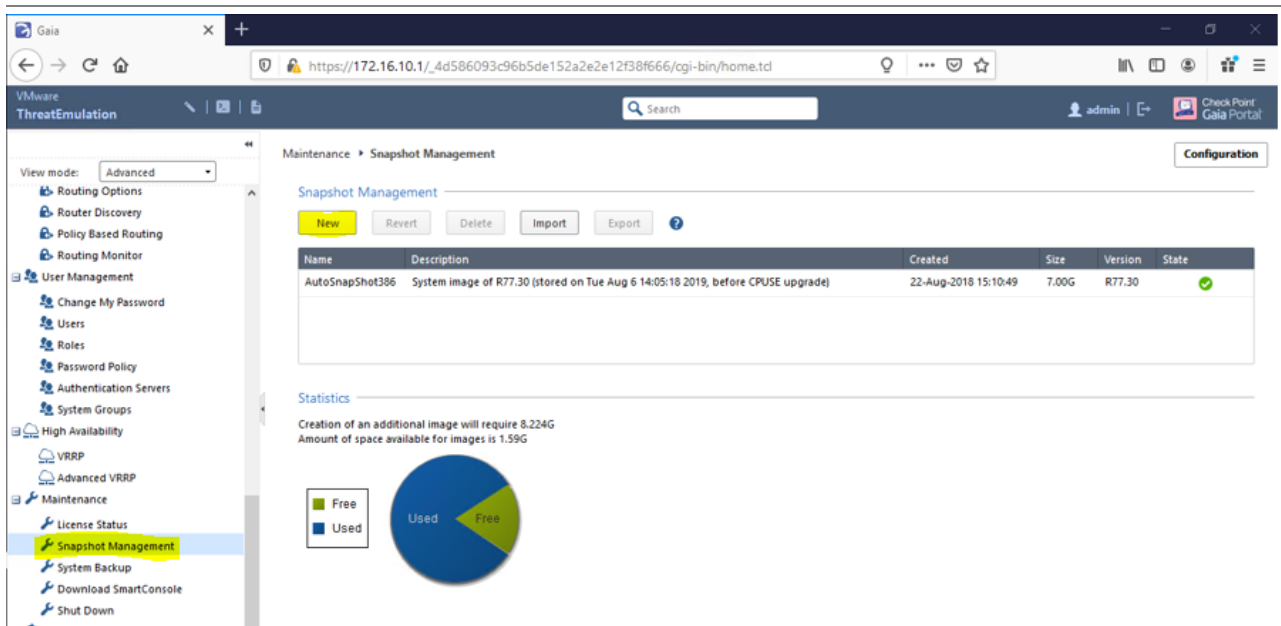


To restore your system from Backup ->

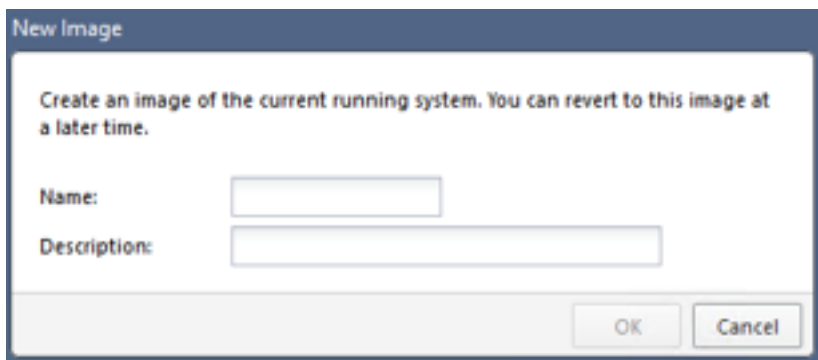


Snapshot

Snapshot Management -> New ->



Give a name and a description to your snapshot



Show configuration

Great command that can run on your Gateway and Management server.

You can use it to copy routes, interfaces and other parameters and paste it to a different appliance.

```
ThreatEmulation> show configuration
#
# Configuration of ThreatEmulation
# Language version: 13.1v1
#
# Exported by admin on Sat Nov 23 14:03:10 2019
#
set installer policy check-for-updates-period 3
set installer policy periodically-self-update on
set installer policy send-cpuse-data on
set installer policy auto-compress-snapshot on
set installer policy self-test install-policy off
set installer policy self-test network-link-up off
set installer policy self-test start-processes on
set arp table cache-size 4096
set arp table validity-timeout 60
set arp announce 2
set message banner on

set message motd off

set message caption off
set core-dump enable
set core-dump total 1000
set core-dump per_process 2
set clienv debug 0
set clienv echo-cmd off
set clienv output pretty
set clienv prompt "%M"
set clienv rows 43
set clienv syntax-check off
set dns suffix ocs.lab.ru
set dns primary 192.168.1.2
set edition 32-bit
set expert-password-hash $1$aNBSBBBU$Bo9g/x5o2sKwgGnzQfFqh1
set format date dd-mmm-yyyy
set format time 24-hour
set format netmask Dotted
set hostname ThreatEmulation
add allowed-client host any-host
set web table-refresh-rate 15
set web session-timeout 10
```

